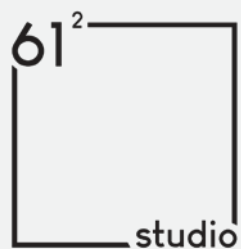


www.square61studio.com



square 61 studio

studio architektoniczne

about me

Square 61 Studio is a design-focused architectural studio based in Berlin. The studio was founded in 2022 by Jarek Karpik. Our mission is to create elegant, site specific architecture combining a modernist aesthetic with simple, natural materials to craft spaces for social life and interaction.

Our design language is influenced by the investigation of historical and vernacular precedents that inform and support our modern response. We believe that architecture is a journey, and are passionate about working in close collaboration with our clients to create great spaces and achieve the best possible quality and performance.

We work through physical models, 2D and 3D drawings and video in an iterative design process, and place a strong emphasis on testing and clear communication throughout the process.



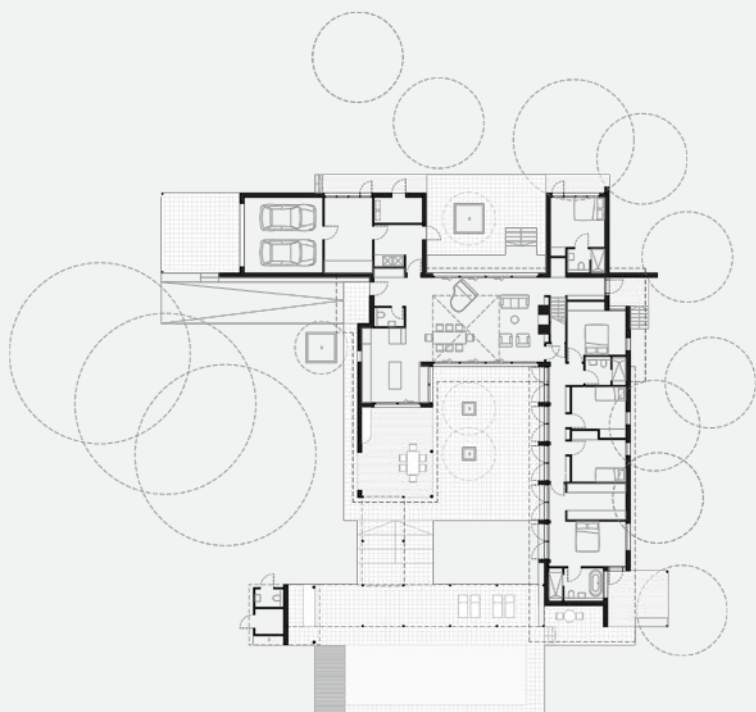
almond tree house

Almond Tree House is located in a quiet, rural site in central Cyprus surrounded by forests and mountains. The design intent was to work with orientation, climate and local materials to create a modern, sustainable home that responds intuitively to context and topography.

The house is carefully positioned on a north-south axis to take advantage of dramatic views while responding to local conditions by controlling shading and solar gain to reduce energy consumption and create pleasant microclimates.

1





The floorplan is designed in a U-Form, reflecting lessons learned from successful local vernacular building forms. This allows the programme to be divided into three clear parts - Entrance and Kitchen, Public Social, and Private Sleeping. The U-Form encloses a shady central courtyard creating a cool, communal heart to the house, protected from the wind and the hot summer sun. A variety of trellises, smaller terraces and a pool complete the outdoor living spaces.





Inside, the house is open plan and filled with natural light from windows, carefully positioned to avoid allowing direct sunlight into the space. The house is centred around a large double height living room with fireplace. Smaller, more intimate bedrooms are tucked into a quieter private wing, while upstairs there is an office and study space looking out across the beautiful Cypriot landscape.

tallow house



2

The Irish countryside has historically been built upon using traditional house types - cottages, long houses and tower houses. Since the 1970's, the bungalow became the go-to building type due to its simplicity and affordability to construct.

This project builds on a typical Bungalow built in the 1980's and rationalises a number of issues relating to the Bungalow house type, mainly reorienting views and capturing light throughout the day.

The primary concept of the new extension is to enhance the connection between the house and the garden, allowing for beautiful views while capturing the sunlight from the south and providing protection from strong north winds. The additional spaces will include a bright kitchen, dining area, and a relaxing space, seamlessly integrated into the existing bungalow and connecting all the transformed areas.



3

skywalk

The project involved the creation of a distinctive platform that would enable visitors to walk over the edge of a cliff and enjoy a stunning view of the surrounding landscape. In addition, a new Kiosk design was constructed and developed to replace the existing one. The main structure of the platform was constructed from two steel beams cantilevering into the valley, with a steel railing featuring a glass panel at the end. The roof and walkways were made of patterned wood, providing a natural feel to the structure.



4



Oak and Ice Cafe is a cozy and stylish coffee shop located in the heart of Berlin. As soon as you step inside, you'll notice the warm and inviting atmosphere, with natural wood finishes and soft lighting creating a relaxing ambiance.

The cafe's interior is a perfect blend of modern and rustic design, with a focus on clean lines and reusability. The walls are adorned with vintage posters and artwork, giving the space a unique character.

which is a focal point of the space. The bar is an eclectic mix of different materials and stainless steel appliances. Behind there is a painting of an oak by Nina Lacey framed by reclaimed old window frames which doubles for shelving and a backdrop to the bar. It features a sleek espresso machine and an impressive selection of coffees and teas from around the world.

The seating area is spacious and comfortable, with a mix of low concrete top tables, cozy armchairs and vintage S-ban train benches. Large windows provide plenty of natural light and a view of the bustling city outside.

One of the standout features of the Oak and Ice Cafe is the coffee bar,



oak & ice

5



This red brick Victorian terrace in Belfast now boasts a modern extension, featuring a spacious kitchen and dining area, a new ground-floor bathroom, and a utility room surrounded by lush, densely planted gardens. The loft has been transformed into an artist's studio, offering breathtaking natural light and picturesque views of the northern mountains.

**ophir
gardens**

past projects

Past experiences include working for William Nickerson in London, Sauerbruch Hutton, BHBVT from Berlin and collaborating with Jamie Whelan Studio from London and Dublin.





past projects

Experiences gained include work on high-end residential projects, residential, mixed-use, office, school, laboratory, university buildings, museums and memorials. Additionally, participation in over 50 competition entries, many of which have been successfully built.

Square 61 Studio
Zabłocie 27 Kraków
Torstrasse 139 Berlin
39A Agion Omologiton Road Cypr
info@square61studio.com
www.square61studio.com